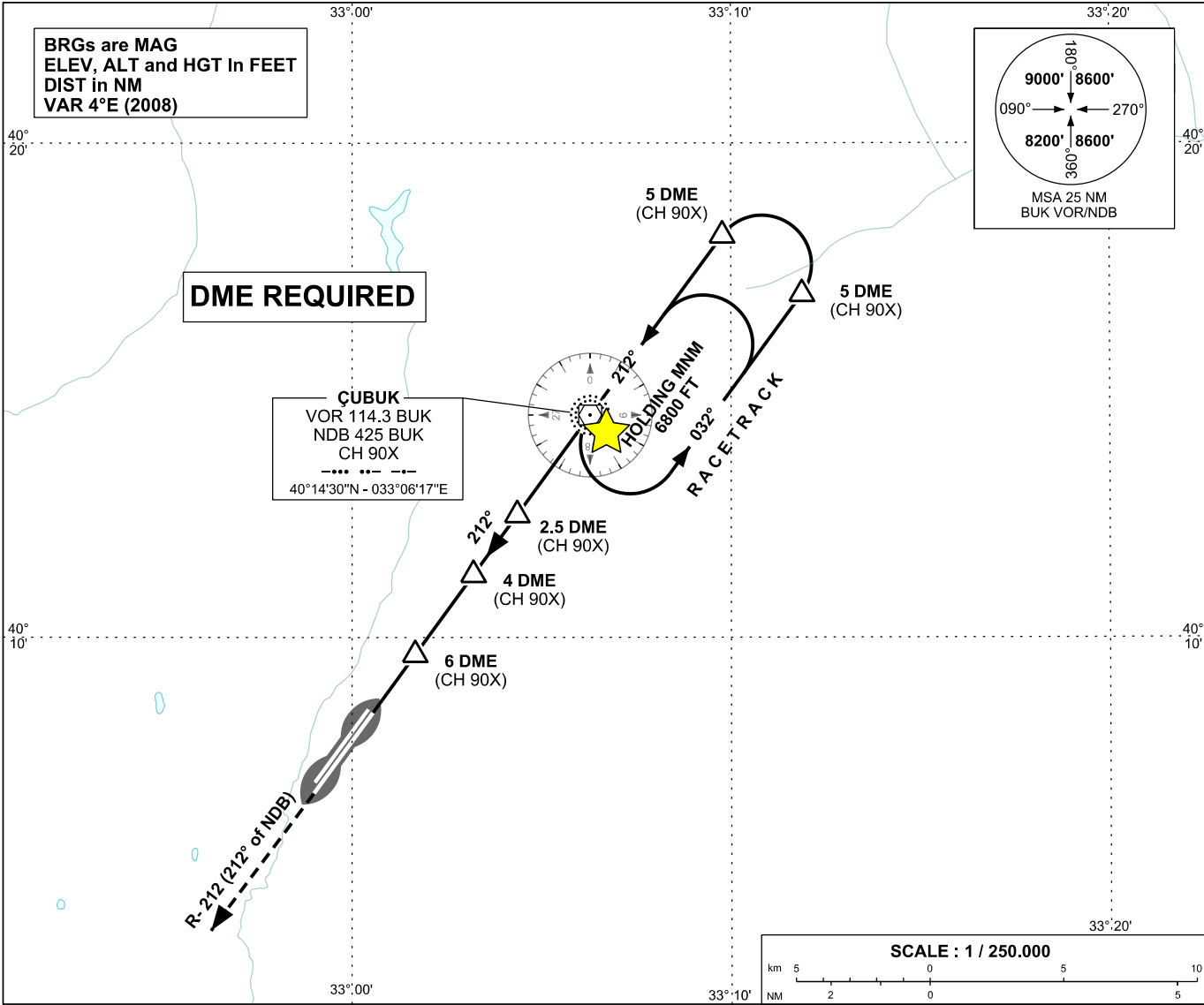


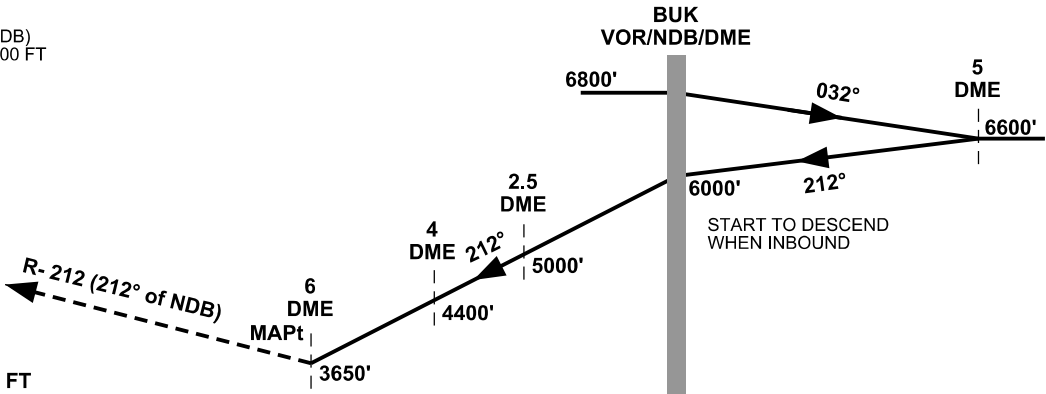
ANKARA/ESENBOĞA
VOR Z, NDB Z
RWY 21L

APP	119.6 - 119.1	AD ELEV	3127 FT
TWR	118.1 - 257.8	TRANSITION ALTITUDE	10 000 FT
ATIS	123.6		

INSTRUMENT
APPROACH
CHART - ICAO



MISSED APPROACH
CLIMB ON R- 212 (212° of NDB)
TO CROSS ANK NDB AT 6500 FT
AND HOLD



NM to/from THR RWY 21L	7	6	5	4	3	2	1	0	1	2	3	4	5	6	7	8	9	10	11	12	13	14
OCA (H)																						
Straight-in Approach	3650' (524')																					
Circling	3800' (673') 4650' (1523')																					

CHANGE: TWR, APP FREQUENCY